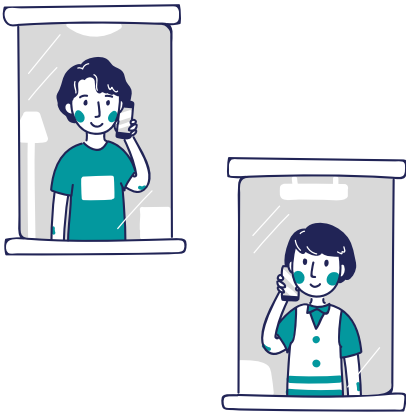


TELEPHONE SUPPORT LINE

TUESDAYS, WEDNESDAYS & THURSDAYS: 9.30-11.00AM (TERM TIME ONLY)

Hampshire and Isle of Wight Educational Psychology offers a regular Telephone Support Line (TSL), which is open to both education staff and parents/carers. The TSL is provided by educational psychologists and all calls are confidential. It is available for:



- Information about a range of issues that might be experienced by children and young people. This can include sharing helpful resources, discussing SEN processes, or signposting to other professional contacts.
- An opportunity for a brief problem-solving conversation around an area of concern.

WHAT TO EXPECT

When you call, a member of our support team will take your details and then ask an educational psychologist to ring you back. Please be aware that we often experience a high volume of calls. Phone calls typically last about 15 to 20 minutes.

CALL YOUR LOCAL AREA OFFICE:

Isle of Wight - 02392 441497

North (Basingstoke & Test Valley North) - 01252 814835

East (East Hants, Hart & Rushmoor) - 01252 814729

South (Fareham, Gosport & Havant) - 02392 441497

West (Winchester, Eastleigh, New Forest & Test Valley South) - 01962 876239

